

Flange speciali a compressione
Compression special flanges



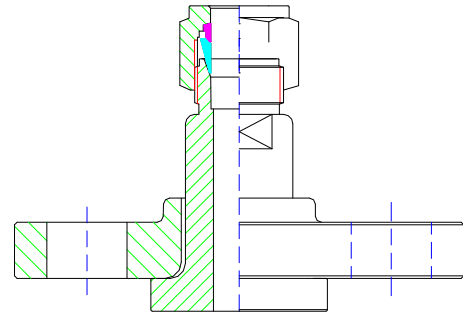
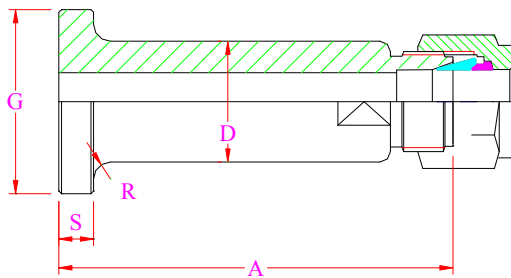
FLANGE SPECIALI A COMPRESSIONE

COMPRESSION SPECIAL FLANGES



Lapped joint tube adaptors Mod. LJ

For applications involving small flanged process valves with simple conversion to instrument lines



Lap-Joint Tube Adaptor Dimension

ND	G	S	A	D	R
1/2"	35	6.5	75	21.3	3.2
3/4"	43	6.5	80	26.6	3.2
1"	51	10	89	33.4	3.2
1.1/4"	63.5	13	95	42.2	4.8
1.1/2"	73	13	111	48.3	6.4
2"	92	15	127	60.3	7.9

Specifications

- 1/2 to 2" N.B. flanges (15 to 50 DN).
- 150 to 2500 lb flange class.
- RFS or RFR available (RTJ not available).
- Standard Stainless Steel body (316L).

Features

- Std. or inverted α-LOK arrangement 1/4" to 1" O.D. (3 mm. to 25 mm. O.D.).
- Full heat code traceability to DIN 50049.3.1.B.
- Appropriate lapped joint flanges available.
- Variety of materials available.
- Choice of smooth or rough spiral faces.

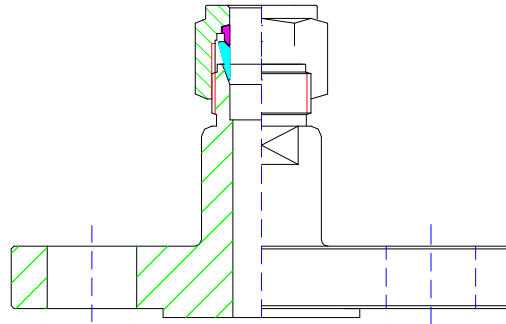
Come ordinare – How to order

Model	Inlet connection (Process)				Flange Class	Outlet (Instrument)		
	Flanged Inlet Size		Flange face style			Compression Fittings α-LOK		
LJ	●		●		●	●		
●	15 = 1/2"	20 = 3/4"	25 = 1"	32 = 1.1/4"	40 = 1.1/2"	50 = 2"		
●	RS = Raised face (Smooth Spiral)		RR = Raised face (Rough Spiral)		RT = Ring type joint			
●	01 = 150 lb	03 = 300 lb	06 = 600 lb	09 = 900 lb	15 = 1500 lb	25 = 2500 lb	50 = 5000 lb	XX = 10000 lb
●	4 = 1/4" OD	6 = 3/8" OD	8 = 1/2" OD	12 = 3/4" OD	16 = 1" OD			
	3M = 3 mm.	6M = 6 mm.	8M = 8 mm.	12M = 12 mm.	16M = 16 mm.	20M = 20 mm.		

Esempio – Example : LJ-15-RS-06-12M

Special flange connector Mod. FC

One piece switchover connector from pipe flange to instrument tubing



Specifications

- 1/2 to 2" N.B. flanges (15 to 50 DN).
- 150 to 2500 lb flange class.
- RF or RTJ finish.
- Flanges to ANSI B16.5.
- Standard Stainless Steel body (316L)

Features

- Std. or inverted α -LOK arrangement 1/4" to 1" O.D (3 mm. to 25 mm. O.D.)
- Full heat code traceability to DIN 50049.3.1.B
- Eliminates taper thread connection
- Variety of materials available

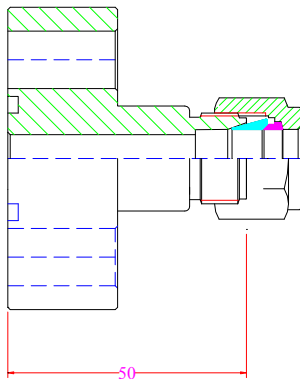
Come ordinare – How to order

Model	Inlet connection (Process)				Flange Class	Outlet (Instrument)		
	Flanged Inlet Size		Flange face style			Compression Fittings α -LOK		
FC								
	●	●	●	●	●	●		
●	15 = 1/2"	20 = 3/4"	25 = 1"	32 = 1.1/4"	40 = 1.1/2"	50 = 2"		
●	RS = Raised face (Smooth Spiral)		RR = Raised face (Rough Spiral)		RT = Ring type joint			
●	01 = 150 lb	03 = 300 lb	06 = 600 lb	09 = 900 lb	15 = 1500 lb	25 = 2500 lb	50 = 5000 lb	XX = 10000 lb
●	4 = 1/4" OD	6 = 3/8" OD	8 = 1/2" OD	12 = 3/4" OD	16 = 1" OD			
	3M = 3 mm.	6M = 6 mm.	8M = 8 mm.	12M = 12 mm.	16M = 16 mm.	20M = 20 mm.		

Esempio – Example : FC-20-RR-03-4

Kidney flanges Mod. KF

Integral α -LOK twin ferrule connection for simple, easy and safe connection from process measurement impulse line I to instrument or manifold.



Specifications

- Rated to 6000 psi.
- Standard P.T.F.E. seal ring / Optional Graphoil available
- Standard Stainless Steel body (316L)

Features

- Standard α -LOK connection up to 1/2" or 12 mm.
- 1/2" Sch. 40 to Sch. XXS butt weld connections available.
- 1/2" socket weld connection available
- Elastomer 'O' ring seals available
- High tensile steel bolts standard.