

Giunti isolanti di linea
Main pipeline insulating joints

GIUNTI ISOLANTI DI LINEA

MAIN PIPELINE INSULATING JOINTS

Classe
PN 100

Applicazioni Principali
Gas Metano, GPL, Gas Naturale, Acqua

Materiali

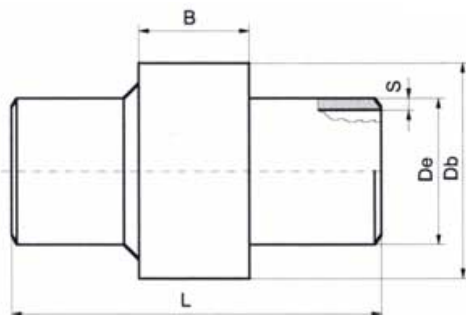
Tronchetti : Acciaio API 5L-GRB / X52 - EN 10208-2 L245/L360

Estemità a saldare

EN10208 / ISO3183 / API 5L (30° root 1.6 mm)

Norme e Codici

-D.M. 24/11/1984, D.M. 16/04/2008, NACE STANDARDS SP0286, D.P.R. 23/03/1998 No. 126 (94/9/CE - ATEX) -|| 2 GD Zona 1 e 21 d. T6, 97/23/CE - (PED a richiesta), (UNI 11105 a richiesta).



Class
PN 100

Main Applications
Methane, LGP, Natural Gas, Water

Materials

Pipe-pups : Acciaio API 5L-GRB / X52 - EN 10208-2 L245/L360

Weid Ends

EN10208 / ISO3183 / API 5L (30° root 1.6 mm)

Norms and Codes

-D.M. 24/11/1984, D.M. 16/04/2008, NACE STANDARDS SP0286, D.P.R. 23/03/1998 No. 126 (94/9/CE - ATEX) -|| 2 GD Zona 1 e 21 d. T6, 97/23/CE - (PED on request), (UNI 11105 on request).

T	R	RT	RP	P
70 °C	>100 Mohm (UR 55%max t=22 °C) >5 Mohm (UR 99% t=22 °C)	VEDI TABELLA SEE TABLE (UR 55%max t=22 °C)		100 BAR

ND	DN	De	S	L	DB	B	RT (RP)-KV-	PIPE MAT.
1/2"	15	21,3	3,2	250	60	59	3.5 (>10)	API 5L GR.B
3/4"	20	26,7	3,2	250	65	60	3.5 (>10)	API 5L GR.B
1"	25	33,4	3,4	250	75	60	3.5 (>10)	API 5L GR.B
1 1/4"	32	42,4	3,6	300	83	68	3.5 (>10)	API 5L GR.B
1 1/2"	40	48,3	3,7	300	95	86	3.5 (>10)	API 5L GR.B
2"	50	60,3	3,9	350	114	104	3.5 (>10)*	API 5L GR.B
2 1/2"	65	76,1	5,5	350	132	117	3.5 (>10)*	API 5L GR.B
3"	80	88,9	5,5	500	155	123	3.5 (>10)*	API 5L GR.B
4"	100	114,3	6	500	190	128	3.5 (>10)*	API 5L GR.B
5"	125	141,3	6,5	600	217	148	3.5 (>10)*	API 5L GR.B
6"	150	168,3	7,1	600	248	161	3.5 (>10)*	API 5L X52
8"	200	219,1	8,2	600	297	183	3.5 (>10)*	API 5L X52
10"	250	273	9,3	800	368	211	3.5 (>10)*	API 5L X52
12"	300	323,8	9,5	800	440	232	3.5 (>10)	API 5L X52
14"	350	355,6	12,7	1000	455	231	3.5 (>10)	API 5L X52
16"	400	406,4	12,7	1000	540	280	3.5 (>10)	API 5L X52
18"	450	457,2	14,3	1000	600	290	3.5 (>10)	API 5L X52
20"	500	508	15,9	1200	684	308	3.5 (>10)	API 5L X52
22"	550	558,8	17,5	1200	730	342	3.5 (>10)	API 5L X52
24"	600	609,6	19	1200	810	405	3.5 (>10)	API 5L X52
26"	650	660,4	19	1200	845	388	3.5 (>10)	API 5L X52
28"	700	711,2	19	1300	890	400	3.5 (>10)	API 5L X52
30"	750	762	19	1300	970	421	3.5 (>10)	API 5L X52
In.	DIMENSIONI IN mm/ DIMENSIONS IN mm							
*opzionale: RT 10KV, RP >20KV / optional: RT 10KV, RP >20KV								

GIUNTI ISOLANTI DI LINEA

MAIN PIPELINE INSULATING JOINTS

Classe

PN 25 / ANSI 150

Applicazioni Principali

Gas Metano, GPL, Gas Naturale, Acqua

Materiali

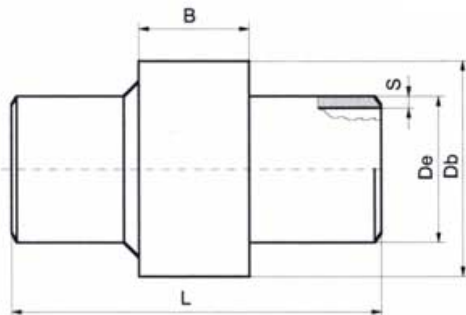
Tronchetti : Acciaio API 5L-GRB / X52 - EN 10208-2 L245

Estemità a saldare

EN10208 / ISO3183 / API 5L (30° root 1.6 mm)

Norme e Codici

-D.M. 24/11/1984, D.M. 16/04/2008, NACE STANDARDS SP0286, D.P.R. 23/03/1998 No. 126 (94/9/CE - Atex) -|| 2 GD Zona 1 e 21 d. T6, 97/23/CE - (PED a richiesta), (UNI 11105 a richiesta).



Class

PN 25 / ANSI 150

Main Applications

Methane, LGP, Natural Gas, Water

Materials

Pipe-pups : Acciaio API 5L-GRB / X52 - EN 10208-2 L245

Weid Ends

EN10208 / ISO3183 / API 5L (30° root 1.6 mm)

Norms and Codes

-D.M. 24/11/1984, D.M. 16/04/2008, NACE STANDARDS SP0286, D.P.R. 23/03/1998 No. 126 (94/9/CE - Atex) -|| 2 GD Zona 1 e 21 d. T6, 97/23/CE - (PED on request), (UNI 11105 on request).

T	R	RT	RP	P
70 °C	>100 Mohm (UR 55%max t=22 °C) >5 Mohm (UR 99% t=22 °C)	VEDI TABELLA SEE TABLE (UR 55%max t=22 °C)		25 BAR

ND	DN	De	S	L	DB	B	RT (RP)-KV-
1/2"	15	21,3	3,6	229	49	34	3.5 (>10)
3/4"	20	26,7	3,9	254	51	35	3.5 (>10)
1"	25	33,4	3,9	250	65	48	3.5 (>10)
1 1/4"	32	42,4	3,9	300	76	50	3.5 (>10)
1 1/2"	40	48,3	3,9	300	83	55	3.5 (>10)
2"	50	60,3	3,9	350	88	60	3.5 (>10)*
2 1/2"	65	76,1	4,8	350	113	65	3.5 (>10)*
3"	80	88,9	4,8	400	125	65	3.5 (>10)*
4"	100	114,3	4,8	400	150	75	3.5 (>10)*
5"	125	141,3	4,8	500	191	92	3.5 (>10)*
6"	150	168,3	5,6	500	215	97	3.5 (>10)*
8"	200	219,1	6,4	500	273	106	3.5 (>10)*
10"	250	273	6,4	700	323	116	3.5 (>10)*
12"	300	323,8	6,4	700	382	154	3.5 (>10)*
14"	350	355,6	7,1	900	426	180	3.5 (>10)*
16"	400	406,4	7,1	900	470	175	3.5 (>10)*
18"	450	457,2	7,1	900	518	200	3.5 (>10)*
20"	500	508	7,1	1000	605	220	3.5 (>10)
22"	550	558,8	8	1000	660	232	3.5 (>10)
24"	600	609,6	8,8	1000	726	250	3.5 (>10)
26"	650	660,4	8,8	1000	766	255	3.5 (>10)
28"	700	711,2	8,8	1200	830	275	3.5 (>10)
30"	750	762	8,8	1200	870	275	3.5 (>10)
In.	DIMENSIONI IN mm/ DIMENSIONS IN mm						
*opzionale: RT 10KV, RP >20KV / optional: RT 10KV, RP >20KV							