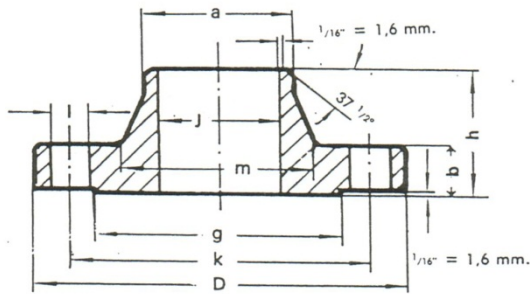


Flange
Flanges

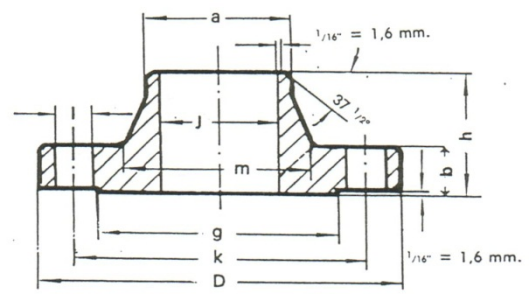
FLANGE FORGIATE

FORGED FLANGE

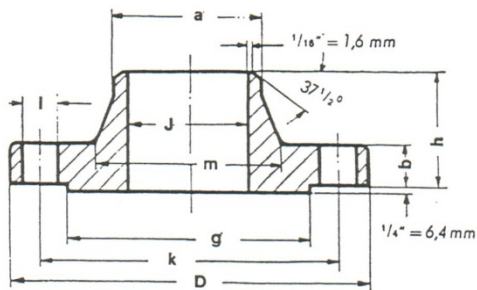
Flange Welding Neck ASA 150 Lb



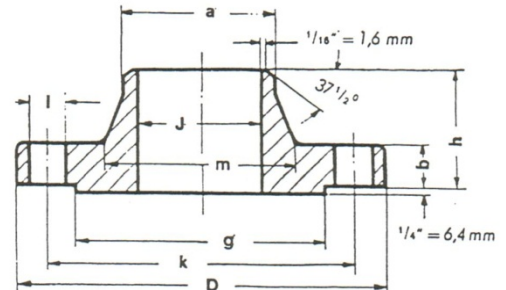
Flange Welding Neck ASA 300 Lb



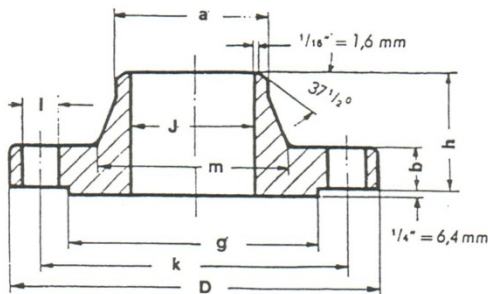
Flange Welding Neck ASA 400Lb



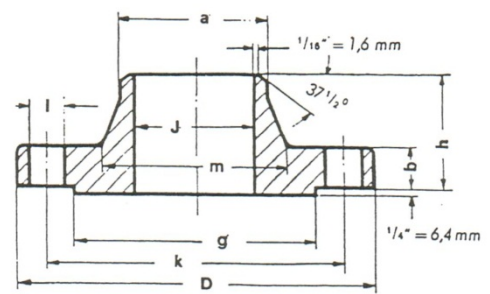
Flange Welding Neck ASA 600Lb



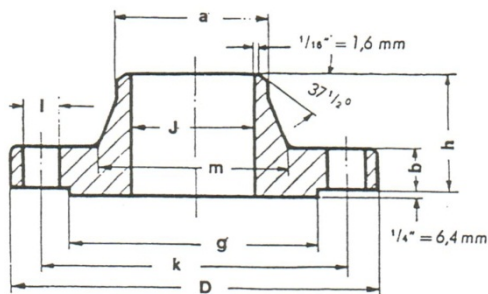
Flange Welding Neck ASA 900Lb



Flange Welding Neck ASA 1500Lb



Flange Welding Neck ASA 2500Lb



Note Generali

In ogni casella la cifra superiore corrisponde alla misura in pollici; quella inferior alla misura in millimetri.
Le flange vengono fornite nella seguente esecuzione standard:

- Lavorazione meccanica e foratura secondo norme ASA
- Sedi di appoggio dei dadi, laminate
- Gradino di tenuta con rigatura fonografica
- Altre esecuzioni a richiesta.

General Notes

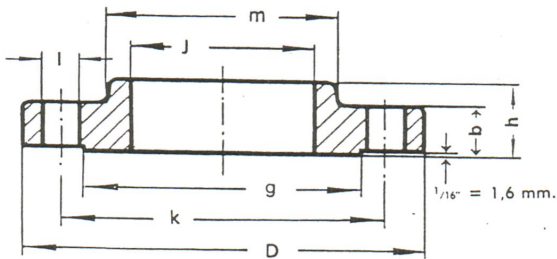
In every square the higher digit is equal to the measure in inches; the lower digit to the measure in millimeters.
Flanges are supplied in the following standard execution:

- Making and drilling according to ASA rules
- Housing support of the dice, laminate
- Step seal grooved phonograph
- Other executions on request.

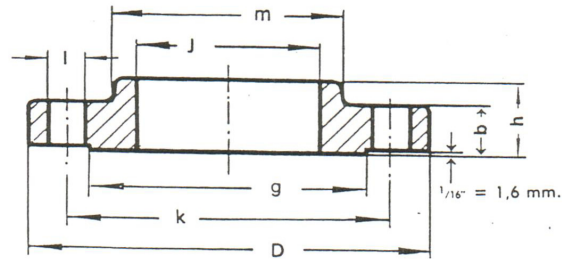
FLANGE FORGIATE

FORGED FLANGE

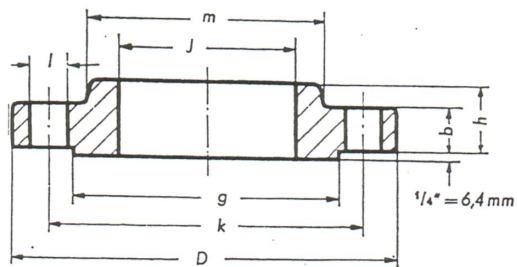
Flange Slip-on ASA 150 Lb



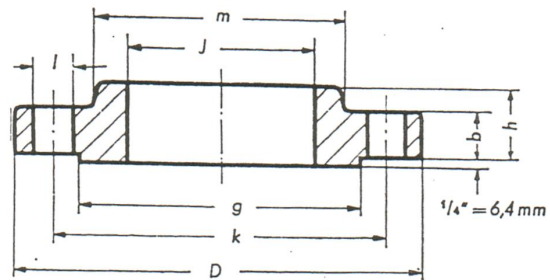
Flange Slip-on ASA 300 Lb



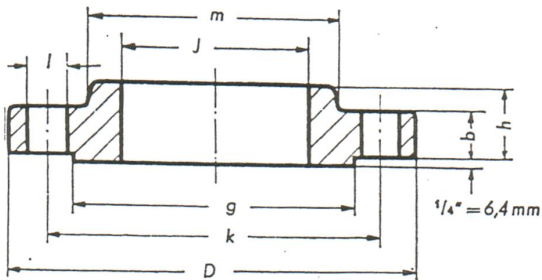
Flange Slip-on ASA 400Lb



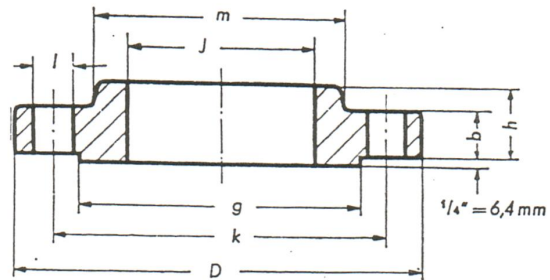
Flange Slip-on ASA 600Lb



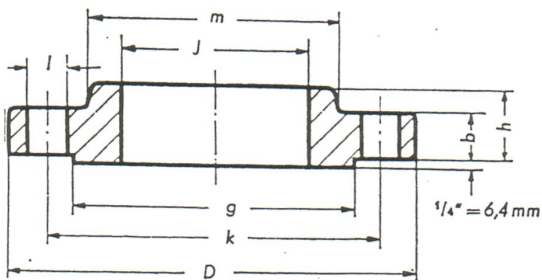
Flange Slip-on ASA 900Lb



Flange Slip-on ASA 1500Lb



Flange Slip-on ASA 2500Lb



Note Generali

In ogni casella la cifra superiore corrisponde alla misura in pollici; quella inferior alla misura in millimetri.
Le flange vengono fornite nella seguente esecuzione standard:

- Lavorazione meccanica e foratura secondo norme ASA
- Sedi di appoggio dei dadi, lamate
- Gradino di tenuta con rigatura fonografica
- Altre esecuzioni a richiesta.

General Notes

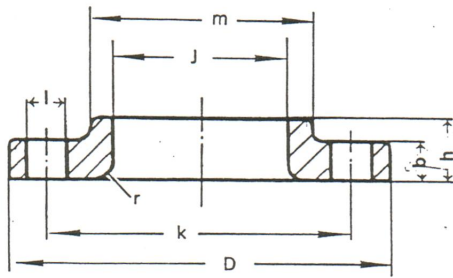
In every square the higher digit is equal to the measure in inches; the lower digit to the measure in millimeters.
Flanges are supplied in the following standard execution:

- Making and drilling according to ASA rules
- Housing support of the dice, lamate
- Step seal grooved phonograph
- Other executions on request.

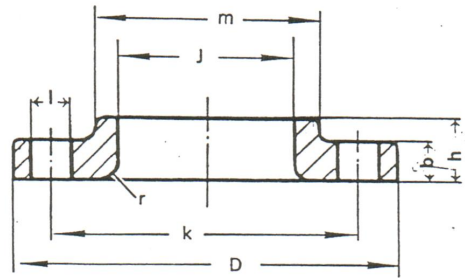
FLANGE FORGIATE

FORGED FLANGE

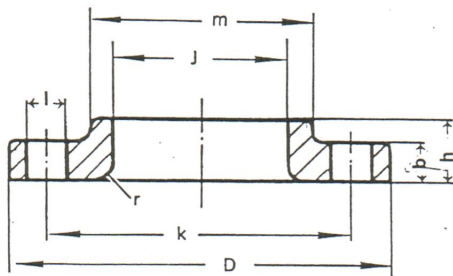
Flange Lap Joint ASA 150 Lb



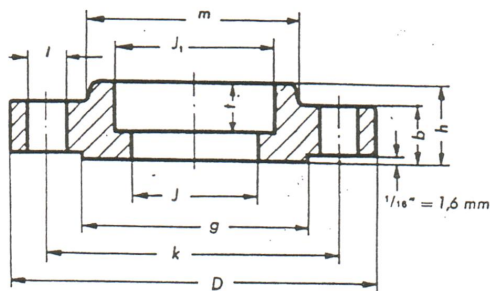
Flange Lap Joint ASA 300 Lb



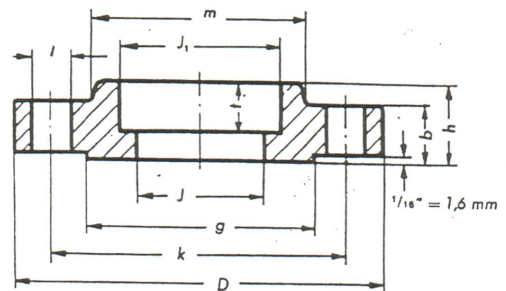
Flange Lap Joint ASA 600Lb



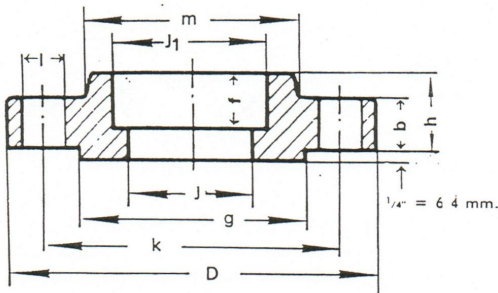
Flange Socket Welding ASA 150 Lb



Flange Socket Welding ASA 300 Lb



Flange Socket Welding ASA 600Lb



Note Generali

In ogni casella la cifra superiore corrisponde alla misura in pollici; quella inferior alla misura in millimetri.

Le flange vengono fornite nella seguente esecuzione standard:

- Lavorazione meccanica e foratura secondo norme ASA
- Sedi di appoggio dei dadi, lamate
- Gradino di tenuta con rigatura fonografica
- Altre esecuzioni a richiesta.

General Notes

In every square the higher digit is equal to the measure in inches; the lower digit to the measure in millimeters.

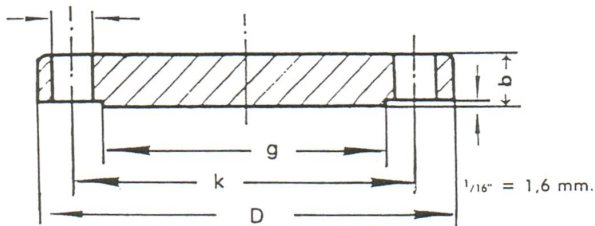
Flanges are supplied in the following standard execution:

- Making and drilling according to ASA rules
- Housing support of the dice, lamate
- Step seal grooved phonograph
- Other executions on request.

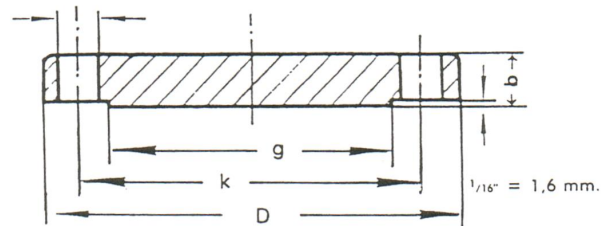
FLANGE FORGIATE

FORGED FLANGE

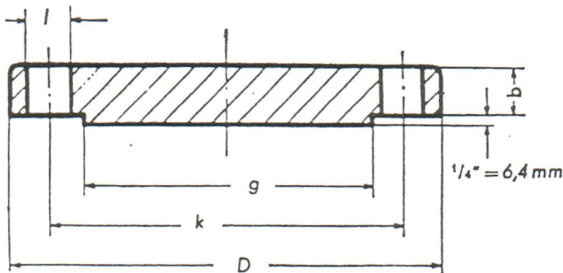
Flange Blind – Flange Cieche ASA 150 Lb



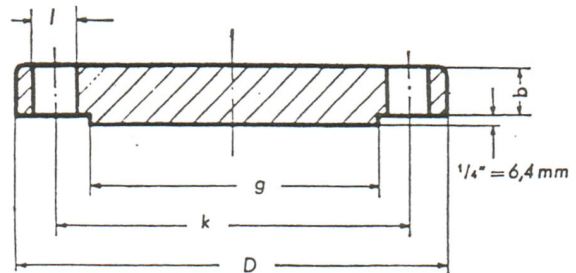
Flange Blind – Flange Cieche ASA 300 Lb



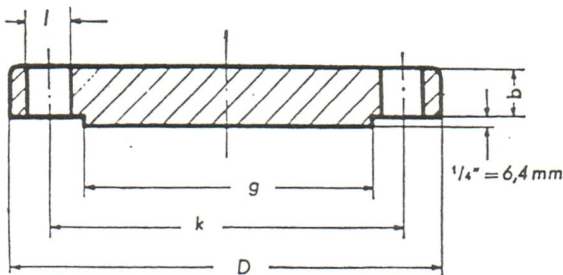
Flange Blind – Flange Cieche ASA 400Lb



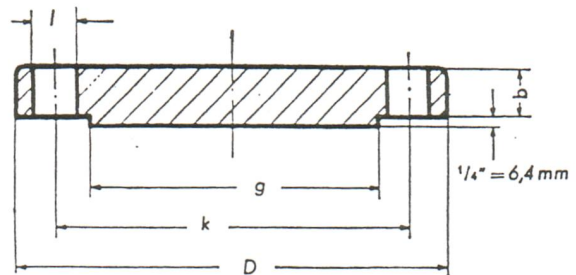
Flange Blind – Flange Cieche ASA 600Lb



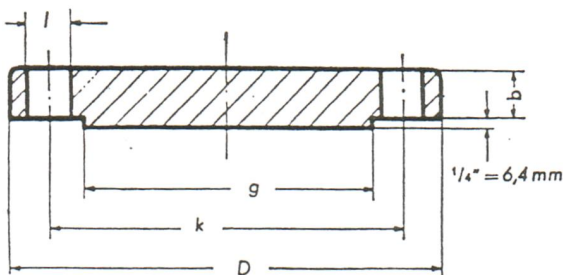
Flange Blind – Flange Cieche ASA 900Lb



Flange Blind – Flange Cieche ASA 1500Lb



Flange Blind – Flange Cieche ASA 2500Lb



Note Generali

In ogni casella la cifra superiore corrisponde alla misura in pollici; quella inferior alla misura in millimetri.
Le flange vengono fornite nella seguente esecuzione standard:

- Lavorazione meccanica e foratura secondo norme ASA
- Sedi di appoggio dei dadi, lamate
- Gradino di tenuta con rigatura fonografica
- Altre esecuzioni a richiesta.

General Notes

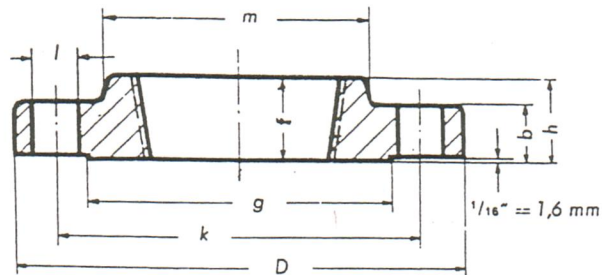
In every square the higher digit is equal to the measure in inches; the lower digit to the measure in millimeters.
Flanges are supplied in the following standard execution:

- Making and drilling according to ASA rules
- Housing support of the dice, lamate
- Step seal grooved phonograph
- Other executions on request.

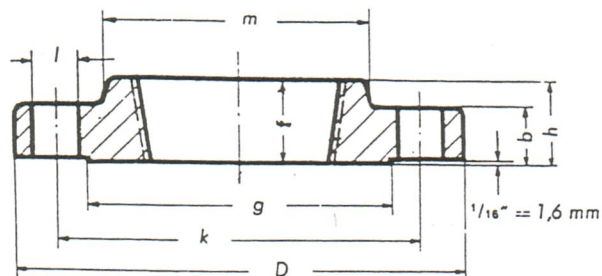
FLANGE FORGIATE

FORGED FLANGE

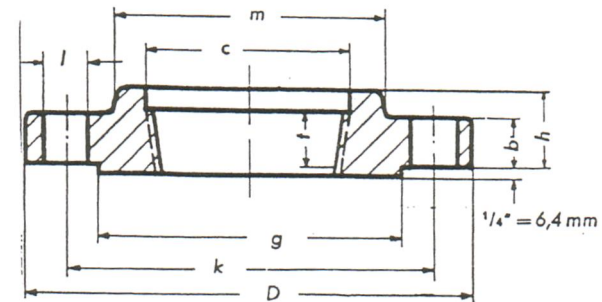
Flange Threaded - Flange Filettate ASA 150 Lb



Flange Threaded - Flange Filettate ASA 300 Lb



Flange Threaded - Flange Filettate ASA 600 Lb



Note Generali

In ogni casella la cifra superiore corrisponde alla misura in pollici; quella inferior alla misura in millimetri.

Le flange vengono fornite nella seguente esecuzione standard:

- Lavorazione meccanica e foratura secondo norme ASA
- Sedi di appoggio dei dadi, lamate
- Gradino di tenuta con rigatura fonografica
- Altre esecuzioni a richiesta.

General Notes

In every square the higher digit is equal to the measure in inches; the lower digit to the measure in millimeters.

Flanges are supplied in the following standard execution:

- Making and drilling according to ASA rules
- Housing support of the dice, lamate
- Step seal grooved phonograph
- Other executions on request.